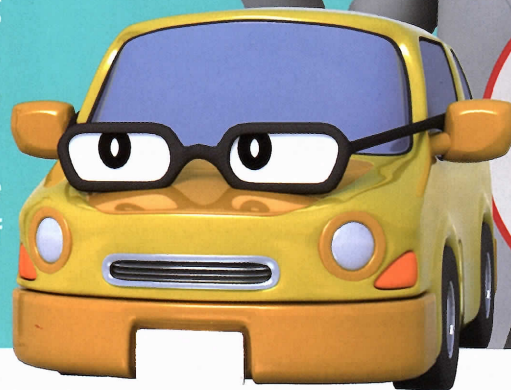


To all foreigners driving in Japan

In recent years, an increasing number of foreigners have been involved in driving accidents resulting in injury or death. Road conditions vary from country to country, but many foreigners have expressed concerns about driving on the left, the narrow roads, and the difficulty of understanding road signs.



Watch out for accidents, and drive carefully!

1

Qualifications

Those without a Japanese driver's license must have an **"international driving permit"** or a **"foreign driver's license + translation"**



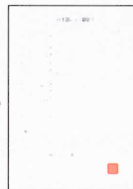
International Driving Permits

International Driving Permit issued by a signatory to the 1949 Geneva Convention

or



+



Foreign Driver's Licenses + Translation

Driving license issued in Estonia, Switzerland, Germany, France, Belgium, Monaco or Taiwan, along with a Japanese translation of it.

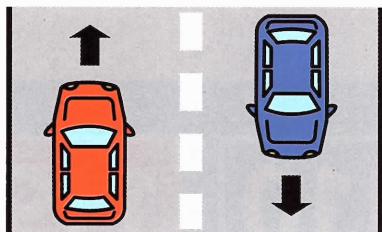
Either type of license will be valid for up to one year from the date of your entry into Japan, but only within the term of validity of your license

2

Fundamentals

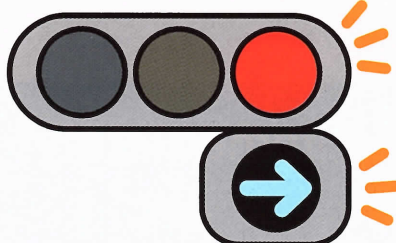
Fundamental traffic rules to avoid accidents

Keep your vehicle to the left



Japan is one of the few countries in the world where you drive on the left.

A red light means, "Stop"



A green arrow indicates the direction in which you may go.

"Stop" sign

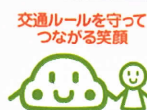


You must stop the vehicle temporarily, when you come to this sign.



警察庁
National Police Agency

都道府県警察
Prefectural Police

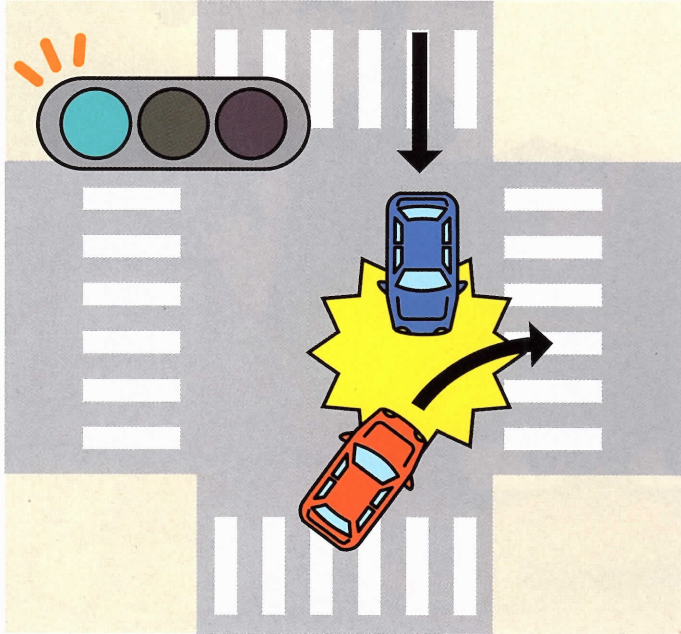


3

Examples

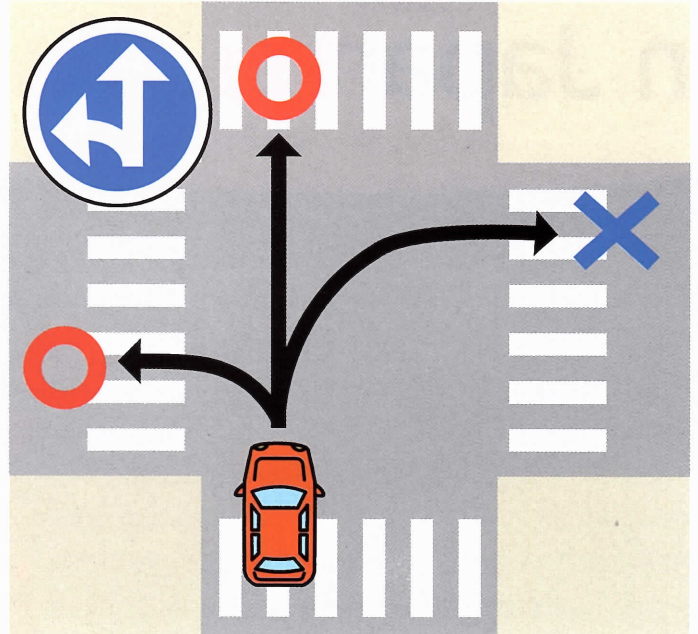
Here are examples of typical **accidents and violations**

Accidents that occur when turning right



Watch out for cars in the opposite lane when turning right at an intersection.

Deviating from designated directions



Where you see "Only designated directions permitted" signs, you can only go in the directions indicated by the arrows.

4

Prohibited acts

There are other **traffic rules** you should know

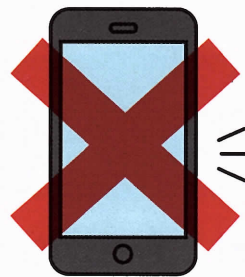
Seatbelts must be worn by all passengers.



Never drive after drinking.



Never use a mobile phone while driving.



Never wear headphones while driving.



Call emergency services immediately!

If you experience trouble or have an accident, call the police (dial 110).

Or if anyone is injured, call an ambulance (dial 119).



警察庁
National Police Agency

都道府県警察
Prefectural Police

